

## Tween Bridge Solar Farm

### 2.8 Plan showing Statutory and Non-Statutory Historic or Scheduled Monument Sites

Planning Act 2008  
Infrastructure Planning (Applications: Prescribed Forms  
and Procedure) Regulations 2009

APFP Regulation 5(2)(m)

Document Reference: 2.8

August 2025

Revision 1













LEGEND

Order Limits

Notes

1. The drawing is for illustrative purposes only

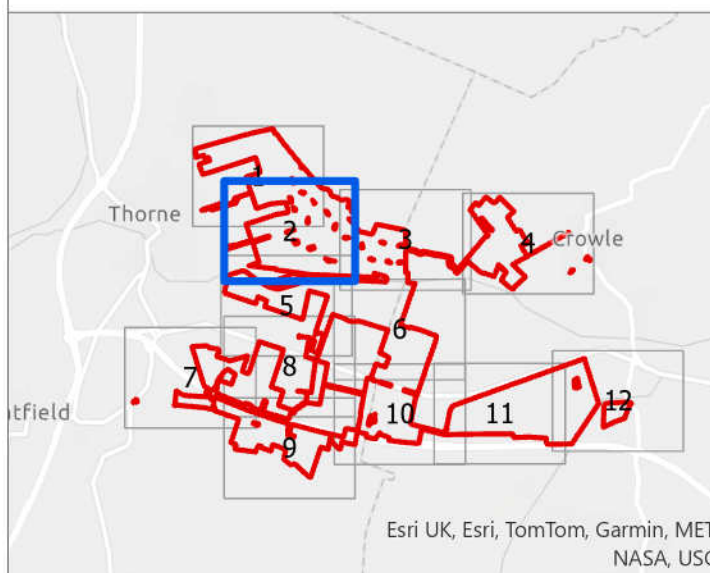


Figure 2.8 Plan Showing Statutory and Non-Statutory Historic or Scheduled Monuments

Infrastructure Planning (Applications: Prescribed forms and Procedure) Regulations 2009: Regulation 5(2)(m)

Coordinate System: British National Grid  
Projection: Transverse Mercator  
Datum: OSGB 1936  
Scale: 1:2,500  
Paper Size: A0  
Sheet: 2 of 12

© Crown copyright and  
Statutory rights 2025  
Ordnance Survey AC000080112

Document Reference: 2.8  
Revision: 1

PINS Number: EN010146  
Drawing Status: Final

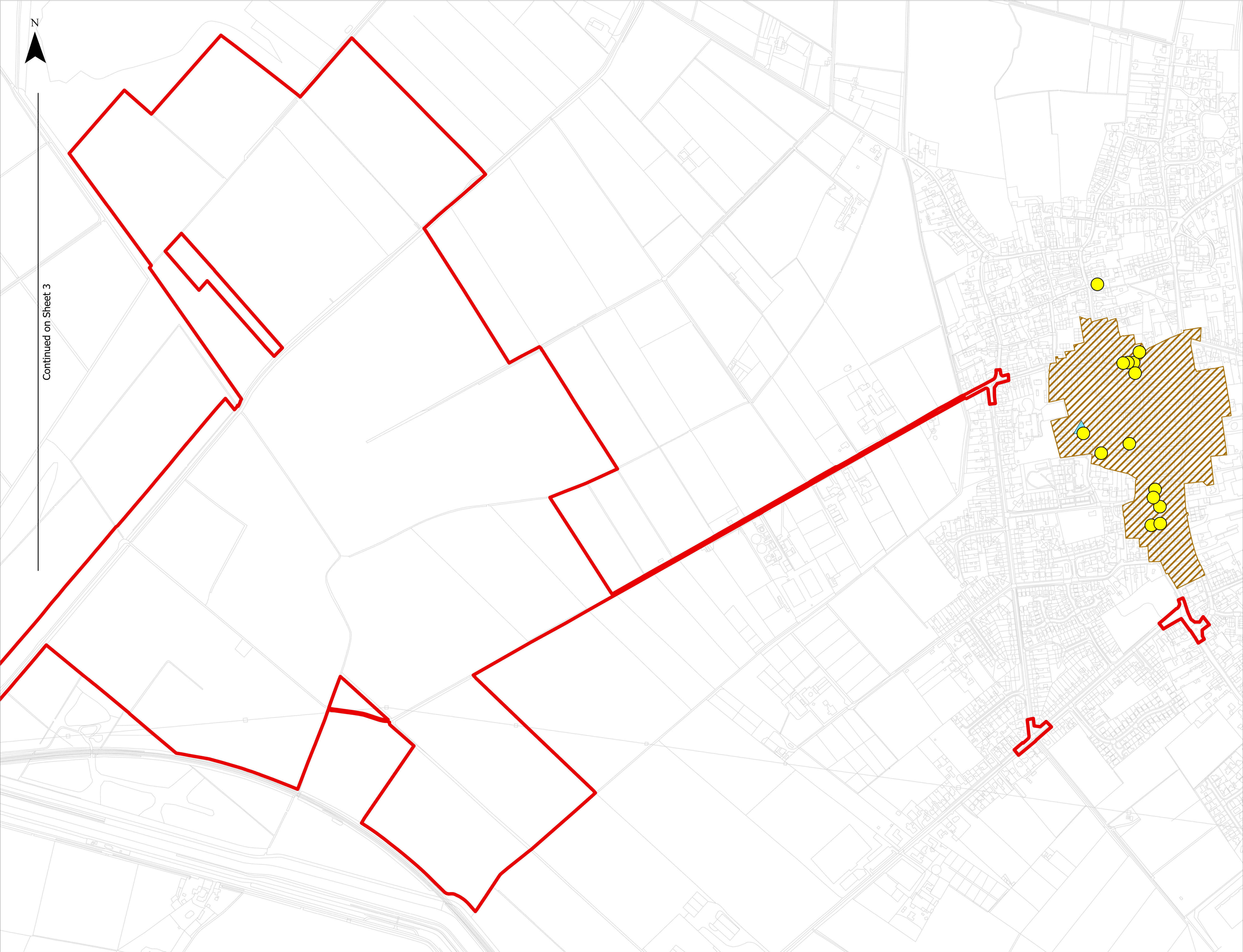
Drawn: NAM  
Checked: EH  
Approved: AD  
Date: 22/08/2025

RWE









Continued on Sheet 3

- LEGEND**
- Order Limits
  - Designated Heritage Assets
  - Listed Buildings Grade I
  - Listed Buildings Grade II
  - Conservation Area

Notes  
1. The drawing is for illustrative purposes only

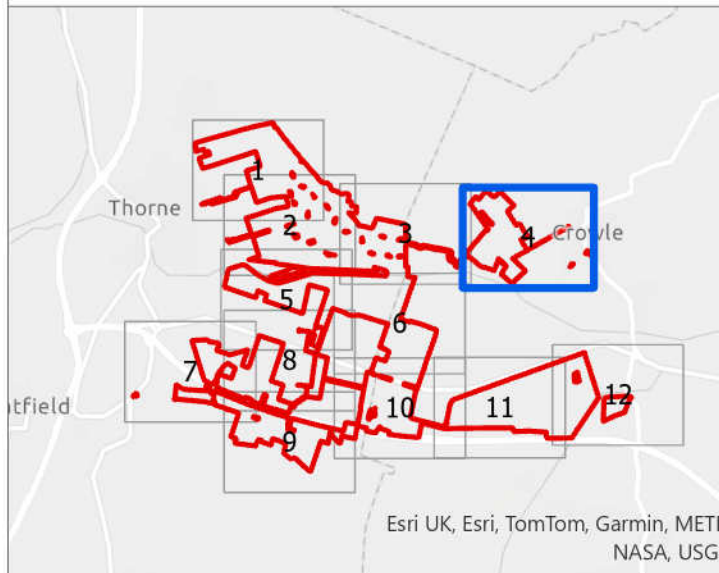


Figure 2.8 Plan Showing Statutory and Non-Statutory Historic or Scheduled Monuments

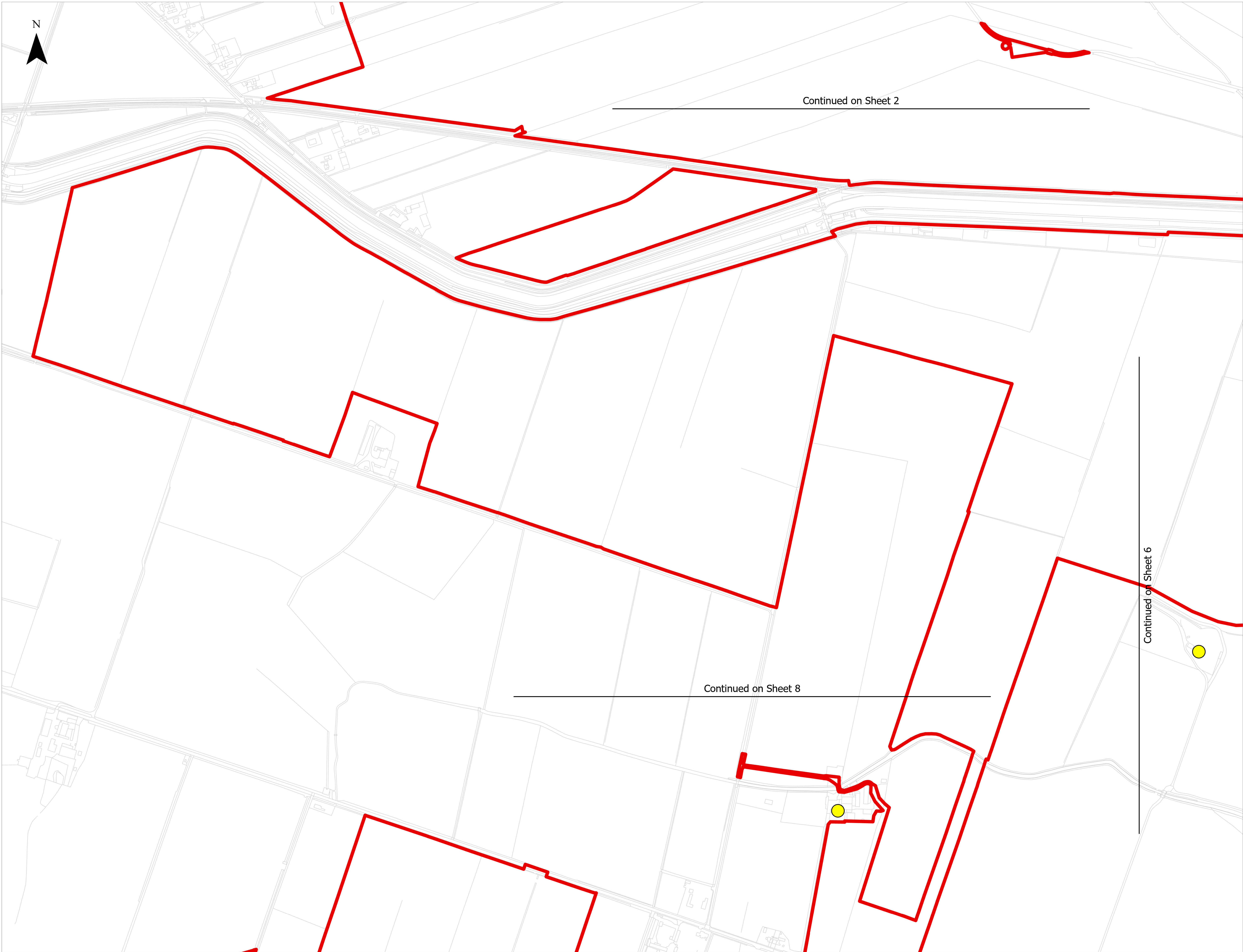
Infrastructure Planning (Applications: Prescribed forms and Procedure) Regulations 2009: Regulation 5(2)(m)

Coordinate System: British National Grid  
 Projection: Transverse Mercator  
 Datum: OSGB 1936  
 Scale: 1:2,500  
 Paper Size: A0  
 Sheet: 4 of 12

© Crown copyright and database right 2025  
 Ordnance Survey 100008012  
 RWE

Document Reference: 2.8  
 Revision: 1  
 PINS Number: EN010146  
 Drawing Status: Final  
 Drawn: NAM  
 Checked: EH  
 Approved: AD  
 Date: 22/08/2025





- LEGEND**
- Order Limits
  - Designated Heritage Assets
  - Listed Buildings Grade II

Notes  
1. The drawing is for illustrative purposes only

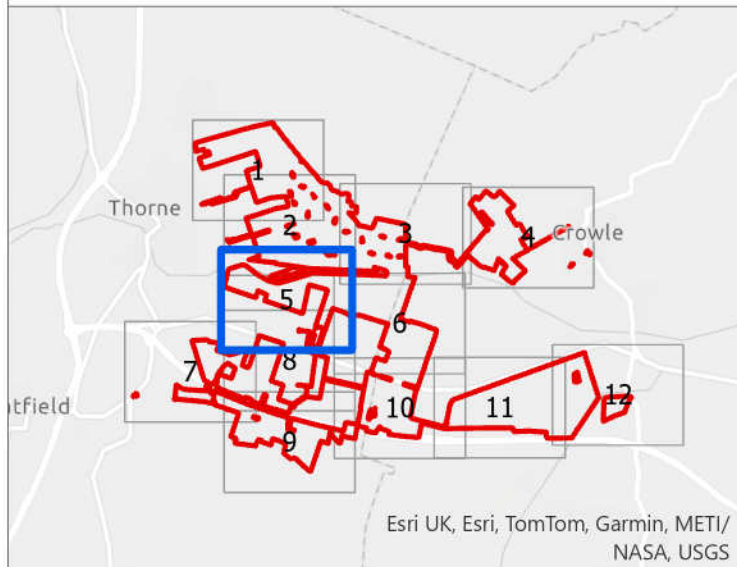


Figure 2.8 Plan Showing Statutory and Non-Statutory Historic or Scheduled Monuments

Infrastructure Planning (Applications: Prescribed forms and Procedure) Regulations 2009: Regulation 5(2)(m)

Scale: 1:2,500 Paper Size: A0 Sheet: 5 of 12

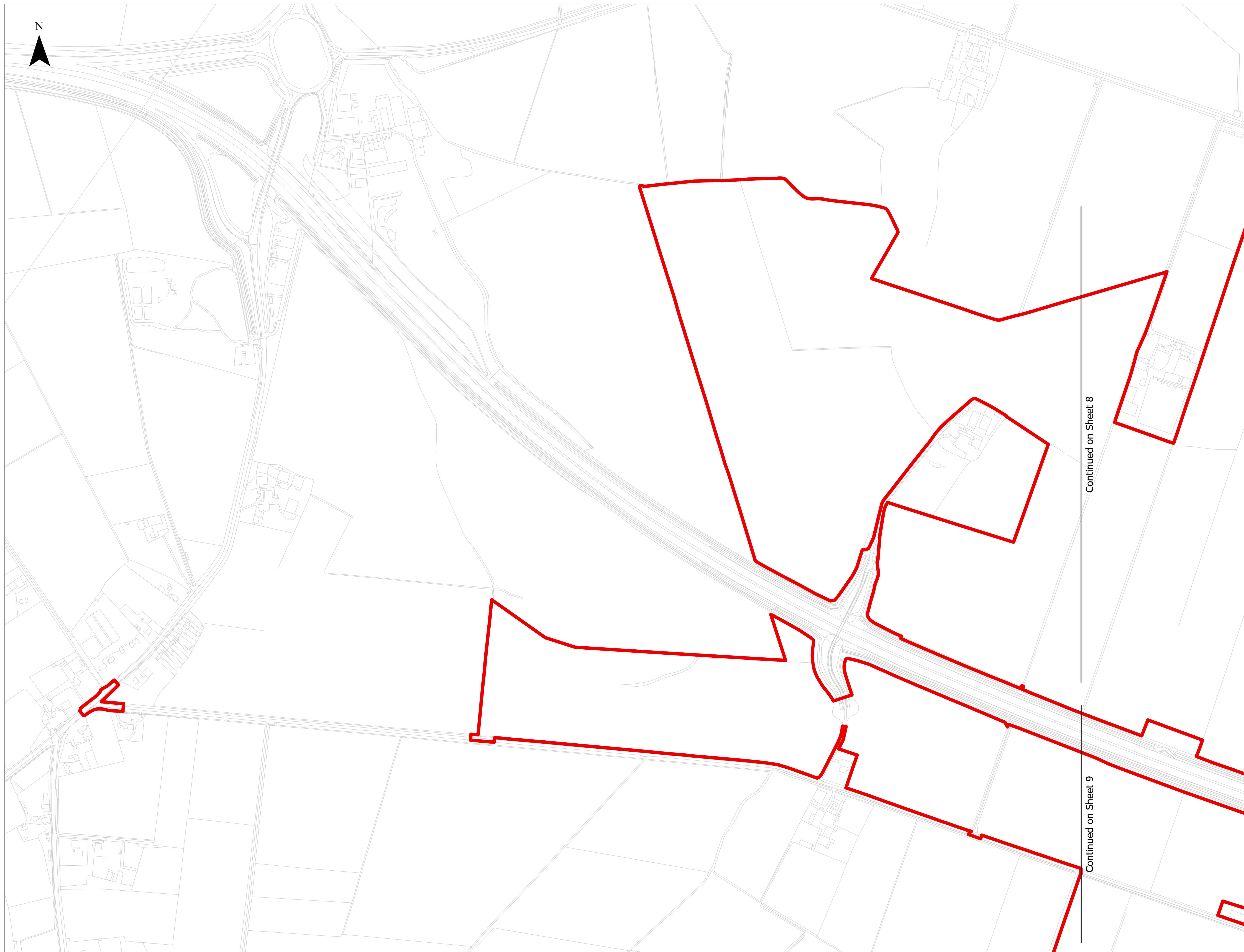
**RWE**

Document Reference: 2.8	Revision: 1
PINS Number: EN010146	Drawing Status: Final
Drawn: NAM	Checked: EH
Approved: AD	Date: 22/08/2025









### LEGEND

## Order Limits

The drawing is for illustrative purposes only.

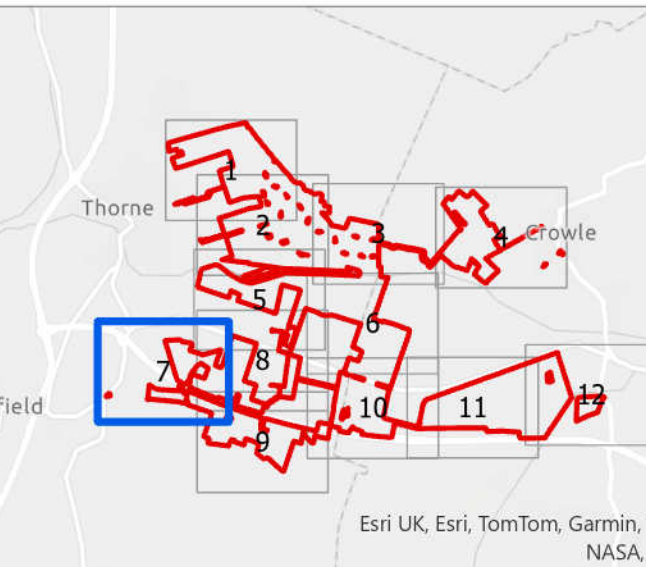
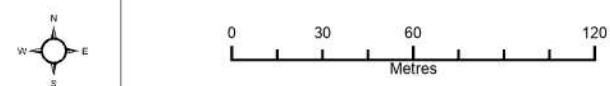


Figure 2.8 Plan Showing Statutory and Non-Statutory Historic or Scheduled Monuments

Infrastructure Planning (Applications: Prescribed forms and  
procedure) Regulations 2009: Regulation 5(2)(m)



coordinate System: British National Grid  
projection: Transverse Mercator  
datum: OSGB 1936

Scale: 1:2,500 Paper Size: A0 Sheet: 7 of 12

<b>RWE</b>			
Document Reference: 2.8			Revision: 1
PINS Number EN010148		Drawing Status: Final	
Drawn: NAM	Checked: EH	Approved: AD	Date: 22/08/2025









**LEGEND**

 Order Limits

Notes  
1. The drawing is for illustrative purposes only.

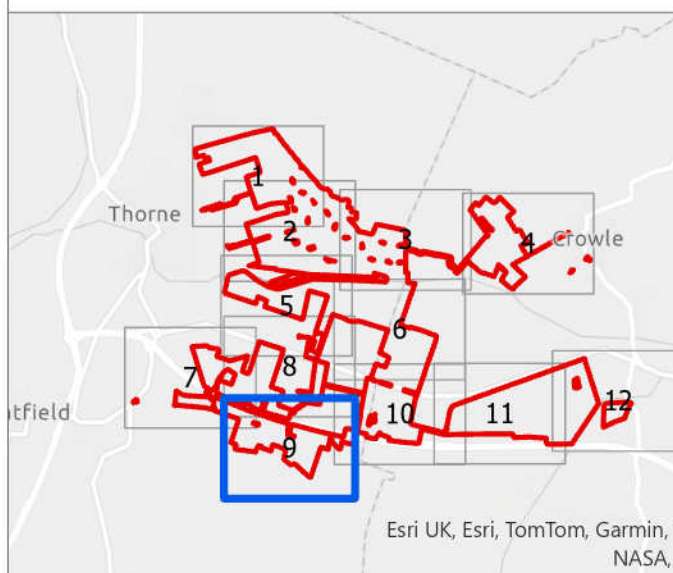
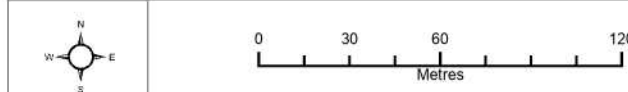


Figure 2.8 Plan Showing Statutory and Non-Statutory Historic or Scheduled Monuments

Infrastructure Planning (Applications: Prescribed forms and Procedure) Regulations 2009: Regulation 5(2)(m)



Coordinate System: British National Grid  
Projection: Transverse Mercator  
Datum: OSGB 1936

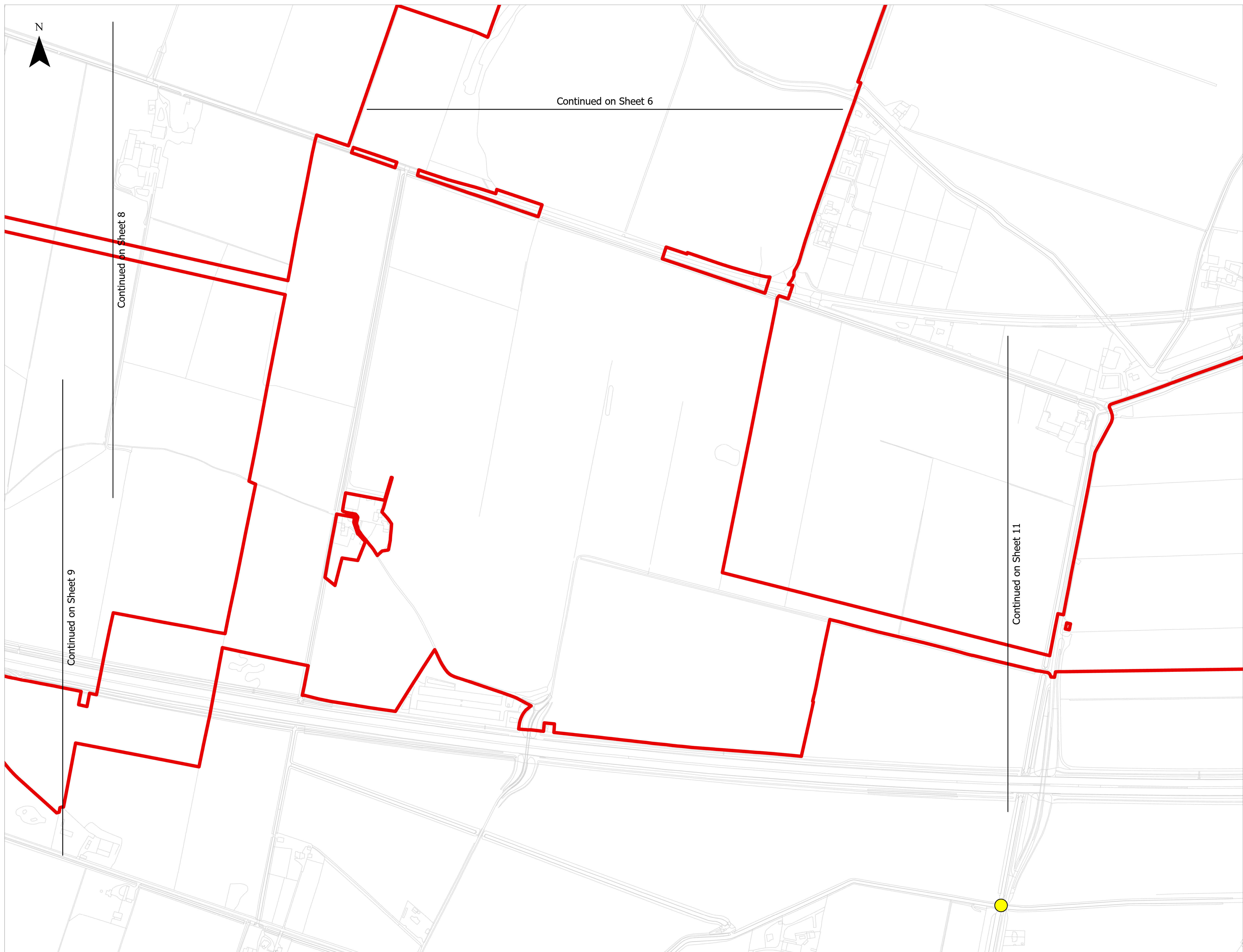
Scale: 1:2,500	Paper Size: A0	Sheet: 9 of 1
----------------	----------------	---------------

**RWE**


Document Reference: 2.8	Revision
-------------------------	----------

PINS Number: EN010148	Drawing Status: Final
-----------------------	-----------------------






**LEGEND**

 Order Limits

Designated Heritage Assets

 Listed Buildings Grade II

Notes  
1. The drawing is for illustrative purposes only.

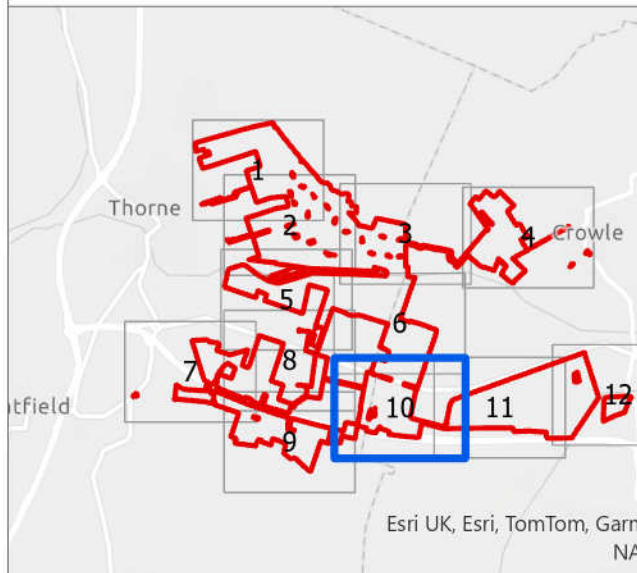
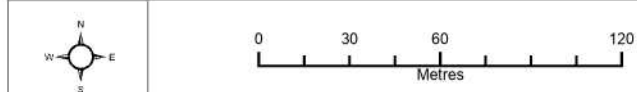


Figure 2.8 Plan Showing Statutory and Non-Statutory Historic or Scheduled Monuments

Infrastructure Planning (Applications: Prescribed forms and Procedure) Regulations 2009: Regulation 5(2)(m)



Coordinate System: British National Grid Projection: Transverse Mercator Datum: OSGB 1936	© Crown copyright and database rights 2020 Ordnance Survey AC00008081
-------------------------------------------------------------------------------------------------	-----------------------------------------------------------------------------

Scale: 1:2,500	Paper Size: A0	Sheet: 10 of 12
----------------	----------------	-----------------



Document Reference: 2.8			Revision: 1
PINS Number EN010148		Drawing Status: Final	
Drawn: NAM	Checked: EH	Approved: AD	Date: 22/08/2025

Path: C:\Users\J19565891\OneDrive\J19565891\OneDrive\Projects\Twentyninefort\J243 Twentyninefort - Overview Plans\Designations.aprx





- LEGEND**
- Order Limits
  - Designated Heritage Assets
  - Listed Buildings Grade II

Notes  
1. The drawing is for illustrative purposes only

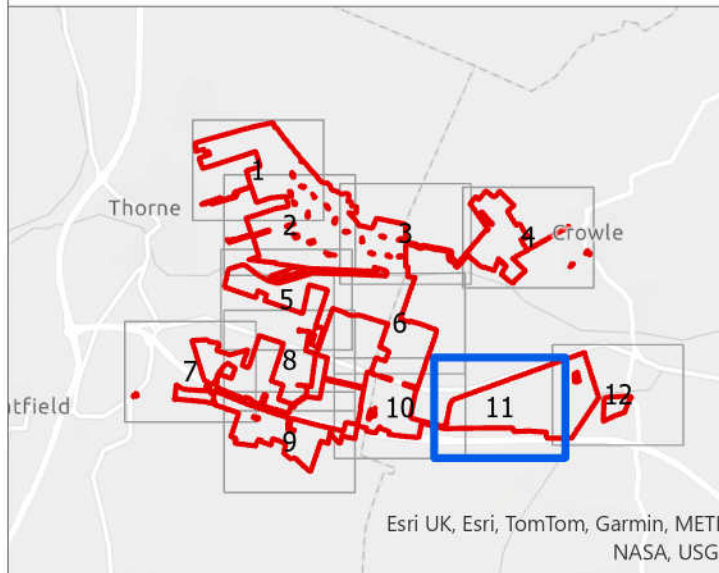
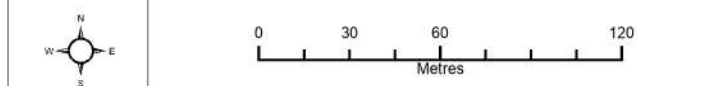


Figure 2.8 Plan Showing Statutory and Non-Statutory Historic or Scheduled Monuments

Infrastructure Planning (Applications: Prescribed forms and Procedure) Regulations 2009: Regulation 5(2)(m)



Coordinate System: British National Grid  
Projection: Transverse Mercator  
Datum: OSGB 1936  
Scale: 1:2,500  
Paper Size: A0  
Sheet: 11 of 12

**RWE**

Document Reference: 2.8  
Revision: 1  
PINS Number: EN010146  
Drawing Status: Final  
Drawn: NAM  
Checked: EH  
Approved: AD  
Date: 22/08/2025





- LEGEND**
- Order Limits
  - Designated Heritage Assets
  - Listed Buildings Grade II

Notes  
1. The drawing is for illustrative purposes only

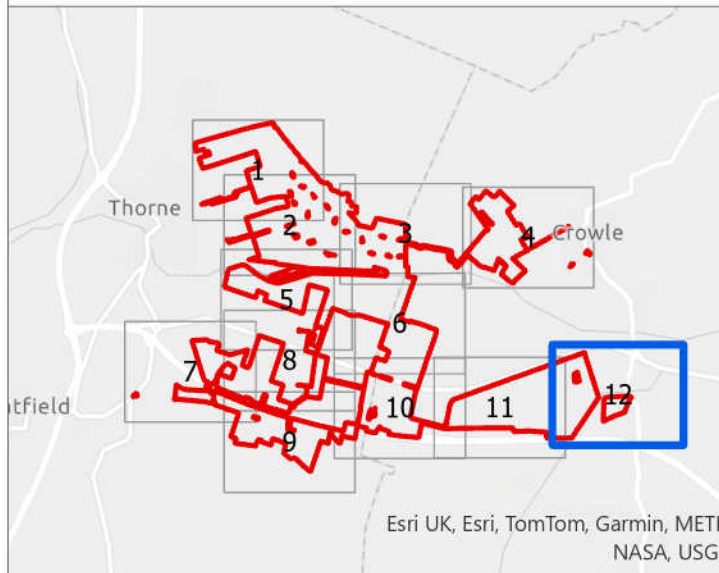


Figure 2.8 Plan Showing Statutory and Non-Statutory Historic or Scheduled Monuments

Infrastructure Planning (Applications: Prescribed forms and Procedure) Regulations 2009: Regulation 5(2)(m)

Coordinate System: British National Grid  
Projection: Transverse Mercator  
Datum: OSGB 1936  
Scale: 1:2,500  
Paper Size: A0  
Sheet: 12 of 12

Document Reference: 2.8  
Revision: 1

PINS Number: EN010146  
Drawing Status: Final

Drawn: NAM  
Checked: EH  
Approved: AD  
Date: 22/08/2025